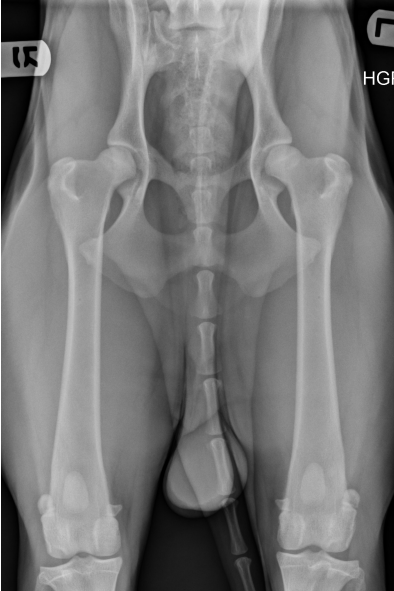
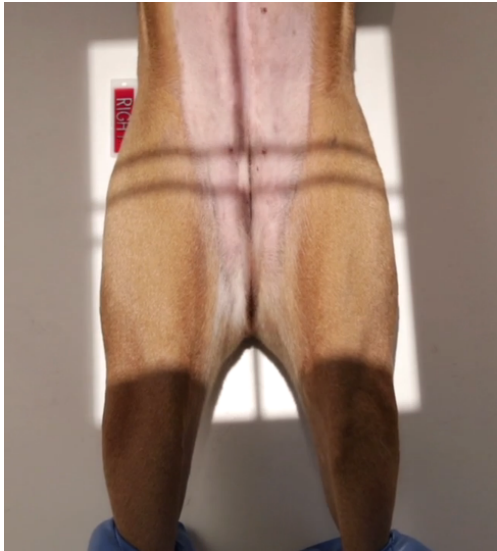


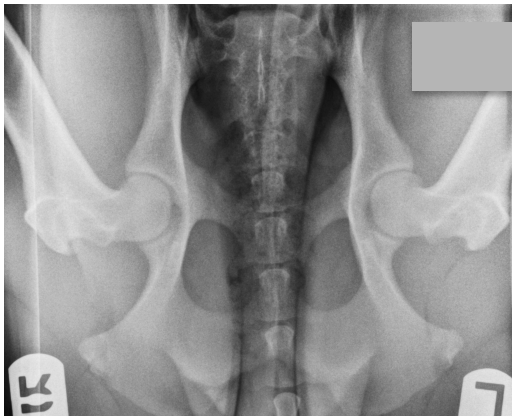
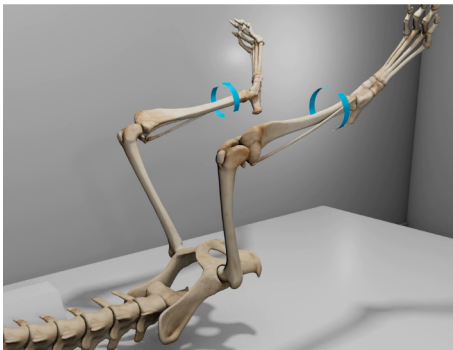
Compare your patient's positioning and respective radiographs to these illustrations. Note: the distraction radiograph will **always** show more hip laxity than the compression radiograph. For detailed instructions, consult your Manual and handout.

Radiograph 1: Hip-Extended

16 month, Male, Golden Retriever



Radiograph 2: Compression View



Radiograph 3: Distraction View

